

2 EATON AVENUE

Bryanston, Johannesburg



NORDIC LIGHT
PROPERTIES

D16 Westlake Square, Westlake Drive, Tokai ZA
021 701 5636 | info@nordiclight.co.za | www.NordicLight.co.za

About the Property

The free standing, A Grade office building is located on the corner of Bryanston Drive and Eaton Avenue, known as 2 Eaton Avenue or The Centre for Integrative Medicine.

This is a purpose-built facility for all medical practitioners, with great exposure to Bryanston Drive and the surrounding area. building consists of medical practitioners



Rental

2 Eaton Ave, Bryanston, JHB

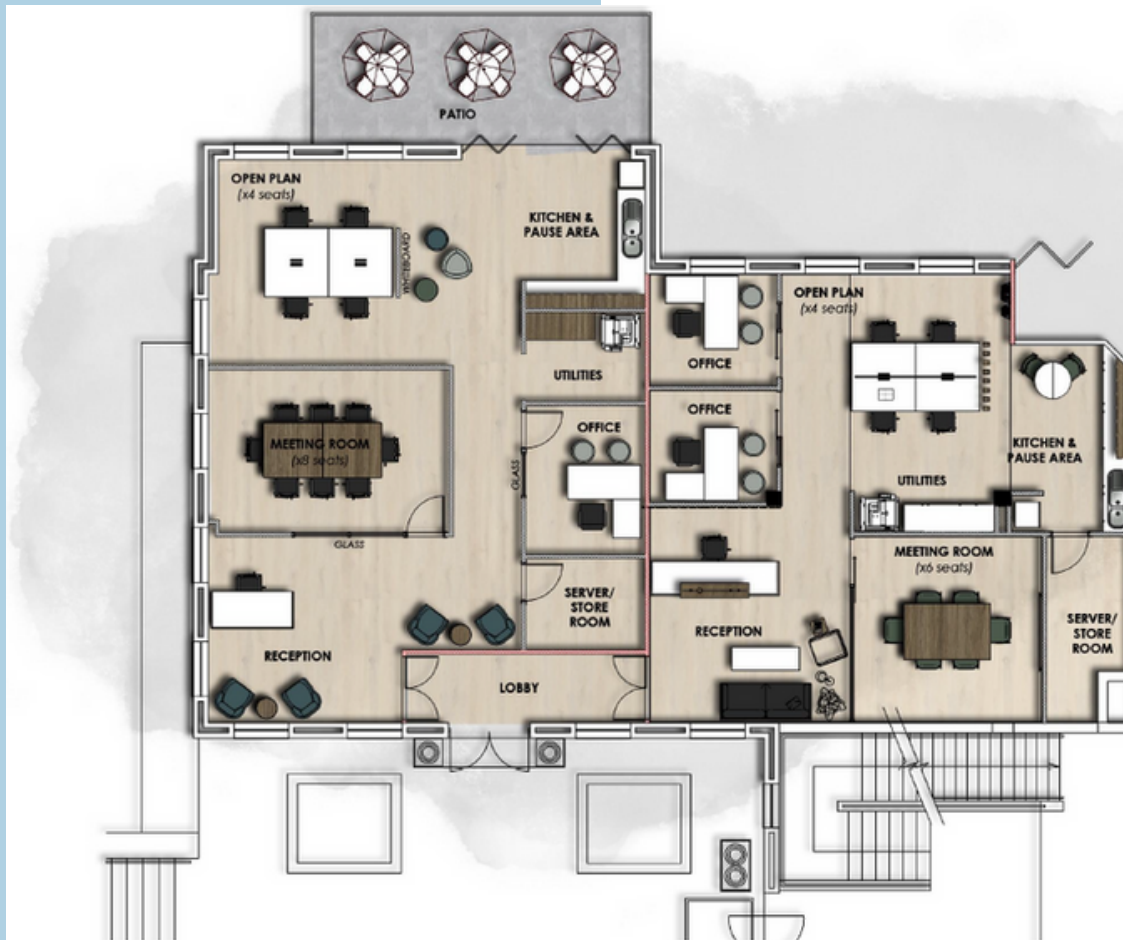
Unit Description	Area	Basement Parking	Open Parking	Total
				
Unit 2, GF, East Wing	193,30m ²	4	4	R38 061.00
Unit 3, GF, North Wing	165,00m ²	3	3	R31 950.00
Unit 4, GF, North Wing	120,00m ²	3	2	R24 350.00
Unit 4, First Floor	45,90m ²	2	1	R13 295.50
Unit 10, First Floor	26,00m ²	1	1	R8 320.00
Unit 11, First Floor	26,00m ²	1	1	R8 320.00
Unit 12, First Floor	45,00m ²	2	2	R13 625.00
Unit 18, First Floor	220,00m ²	4	4	R42 600.00
Building Amenities	 24-Hour Security	 Generator		



[View Virtual Tour](#)

Proposed Design

For Ground Floor Units 3 and 4.



Prime Location



Justin Slatter
082 462 9509
justins@nordiclight.co.za
www.nordiclight.co.za

